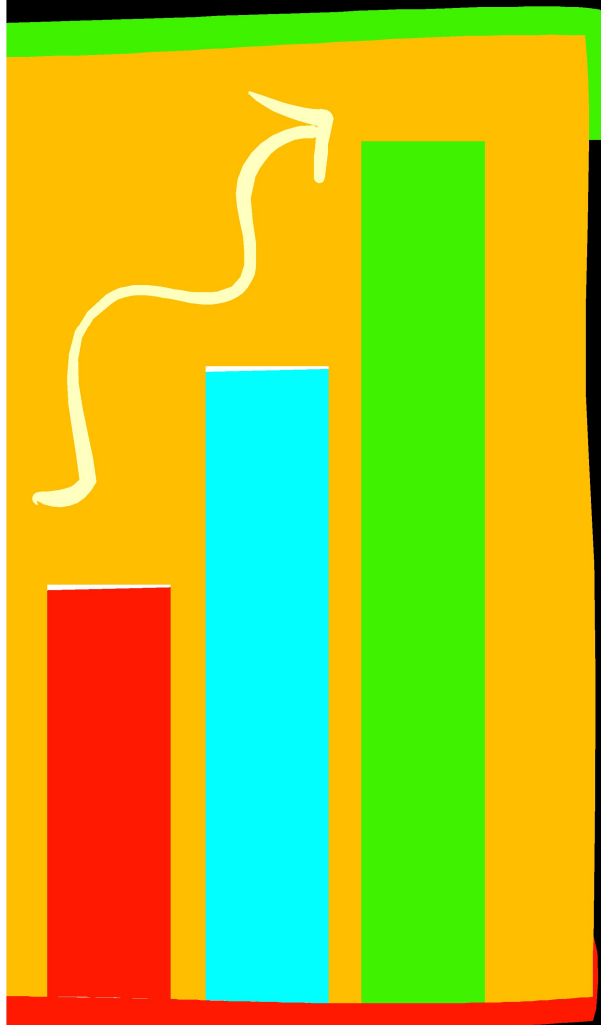


WESTON-SUPER-MARE
HORTICULTURAL SOCIETY



ANNUAL SHOW 2022

Will be held

**At St Paul's Church Walliscote
Road Weston-super-Mare**

**From 11am until 3pm on Saturday 13th
August 2022**

Flower Show Secretary John Chapman
29 The Crescent,
Worlebury
Weston-super-Mare,
BS22 9SR
01934 418904

Staging of exhibits will be from 4.30pm-8pm on Friday 12th
August,
and from 7am to 8.15am on Saturday 13th August.

The Show will open at 11am and close at 3pm
Trophies will be presented at 2pm

WELCOME

This year the show is being held at St Paul's Church, Walliscote Road, Weston-super-Mare, BS23 1EF. Owing to the uncertainty of how many exhibitors that are willing to show this year, it has been decided to stage a much reduced show, at a smaller venue.

Trophies will be awarded for the Best exhibit in the Flower, Pot Plant, Vegetable, Homecraft and Children's classes.

Thanks to all judges and members who have helped support this event. We hope you will enjoy it.

Please encourage your friends, families and neighbours to enter and visit the show

John



The Weston-super-Mare Horticultural Society

Is affiliated to the following National Societies



The National Allotment Society

The National Society of Allotment and Leisure Gardeners



Rules and Regulations

1. Entries must be sent to the Show Secretary's house, 29 The Crescent, Worlebury, Weston -super-Mare, BS22 9SR, by 9pm on Wednesday 10th August, and must be made on the enclosed entry form. Late entries will not be accepted.
Entries may also be e-mailed to the Show Secretary at 1951chapman@gmail.com
2. Staging will be from 4.30pm-8pm on Friday 12th August and from 7am to 8.15am on Saturday 13th August._
3. The Judge's decision is final. Judging of horticultural and flower exhibits will be in accordance with NVS and RHS rules.
4. Exhibitors are allowed only ONE entry per class. Exhibitors to provide own vases where required.
5. No exhibit to be removed before close of the show at 3pm.
6. All horticultural exhibits must be grown by the exhibitor.
7. Trophies will be presented at 2pm on the day of the show. Winners will be responsible for the safe keeping of them whilst in their possession and their return in clean and good condition to the Show Secretary by 1st July 2023.
8. The Society takes no responsibility for damage to, or loss of, any exhibit.
9. The Society takes no responsibility for any accident arising from any cause whatsoever to any exhibitor, exhibitor's assistant or visitor.
10. In this schedule a vase means any container suitable for the size of the exhibit.

CLASSES

FLOWERS

- 01 Dahlias: one vase of three of one kind
- 02 Dahlias: one specimen
- 03 Gladiolus: one specimen
- 04 Annuals: one vase of five
- 05 Sweet Pea: five stems
- 06 A specimen bloom or stem or spray
- 07 Rose: one specimen bloom
- 08 Rose: one stem of cluster flowered
- 09 Perennials: a vase of three stems, any variety or varieties
- 10 Mixed Flowers: one vase of not more than nine stems for quality and display
- 11 Six Fuchsia Heads: displayed on a board
- 12 Planted Tub/Pot: max size 45cm diameter

A Trophy will be awarded for the best exhibit in classes 01 to 12.

POT PLANTS (Maximum pot size 20cms)

- 15 Specimen Orchid: one
- 16 Cacti or succulent: one
- 17 Fuchsia: one
- 18 Begonia flowering: one
- 19 Begonia foliage: one
- 20 Two plants: one flowering and one foliage. (max 20cm internal diameter at rim)
- 21 Geranium: one pot (max 20cm internal diameter at rim)

A Trophy will be awarded for the best exhibit in classes 15 to 21.

VEGETABLES

- 25 Tomatoes: other than cherry type: five
- 26 Tomatoes: cherry type: five
- 27 Beans: French: five
- 28 Beans, Runner: five
- 29 Carrots: three (tops trimmed to approx 10cm)
- 30 Chillies, six of one kind.
- 31 Shallots: (large): six
- 32 Shallots: (pickling): six
- 33 Cucumber: one
- 34 Beetroot: three (tops trimmed to approx 10cm)
- 35 Onions: from set: three
- 36 Potatoes: white: five
- 37 Potatoes: other than white: five
- 38 Squash: one
- 39 Courgettes: three of one kind
- 40 Cabbage: one head.
- 41 Any other vegetable not mentioned above: three
- 42 A Trug of the best vegetables in your garden, minimum 6 items.

A Trophy will be awarded for the best exhibit in classes 25 to 42.

MEAT AND BAKERY

- 45 Marmalade: one jar
- 46 Jam: one jar
- 47 Chutney: one jar
- 48 Victoria Sandwich; (own recipe)
- 49 Cake made to include a vegetable (for example a carrot cake)
- 50 Scones, six sweet

A Trophy will be awarded for the best exhibit in classes 45 to 50.

CHILDREN'S SECTION

Up to 6 years

- 55 Decorate a paper plate: Queen's Platinum Jubilee theme
- 56 Build an animal principally from vegetables
- 57 Make a Miniature Garden in a seed tray
- 58 Jam jar of flowers from your garden
- 59 Six Cup Cakes

Up to 11 years

- 60 Decorate a paper plate: Queen's Platinum Jubilee theme
- 61 Build an animal principally from vegetables
- 62 Make a Miniature Garden in a seed tray
- 63 Jam jar of flowers from your garden
- 64 Six Cup Cakes

Weston-super-Mare Horticultural Society Annual Show Entry Form

Please give the number(s) of the class(es) you wish to enter.

Please use a separate form for each exhibitor.

Class No	Class No	Class No

Exhibitors are allowed only one entry per class, but can enter as many classes as they want to. Staging will be from 4.30pm-8pm on Friday 12th August and from 7am-8.15am on Saturday 13th August.

Entries to reach the Show Secretary, John Chapman, 29, The Crescent, Worlebury, Weston-s-Mare, BS22 9SR. No later than 9pm on Wednesday 10th August 2022.

Entries may also be e-mailed to the Show Secretary at 1951chapman@gmail.com

I agree to abide by the rules of the show and that my entries were grown or made by me. I accept that the Society cannot take any responsibility for damage to, or loss of my exhibit(s), or for any accidents arising from any cause whatsoever to any exhibitor, exhibitor's assistant or visitor to the show, or for any loss or damage, however caused, to the property of such person.

Name _____ Mr/Mrs/Miss/Ms
Address _____
Post Code _____ Phone _____ e-mail _____
Signed _____

Exhibitor Number.....

HINTS FOR EXHIBITORS

VEGETABLES

General guidance – beetroots, carrots, etc. - must have the leaves cut so that approximately 10cm of leaf stalk remains. Apart from improving the presentation of the roots, this helps to make the exhibits anonymous as far as the judge is concerned.

Beetroot (Globe) - Select beetroot (not too large, between 60 and 75mm) with smooth skins of even size and uniform dark colour. Remove side roots, but retain full length of taproot. Trim foliage to approximately 75mm.

Carrots - Select full-length roots of good shape, good even colour and size, without discoloration at the top – free from side roots and from green at the crown. Skins clean and bright. Stage with approximately 75mm of foliage, exhibit in a row with roots facing the front.

Courgettes – Select young tender fruits of good uniform shape and colour, approximately 35mm in diameter and approximately 150mm in length. Of any colour but well matched. Stage flat with or without flowers still adhering.

Cucumber - Select fresh, young, green, tender, blemish free straight fruits of uniform thickness, with short handles and with flowers still attached. Retain waxy bloom.

French Beans/Runner Beans - Select straight tender pods of even length and good colour with no outward sign of seeds. Exhibit with stalk intact on a plate or directly on the table, stalks at one end, tails at the other.

Herbs - fresh, healthy, clean foliage.

Onions – Avoid soft, stained specimens with thick, immature necks. Do not over skin. Select uniform well-ripened bulbs of good colour. Tops should be tied with uncoloured raffia with the roots neatly trimmed to the base of the onion. May be staged on rings or soft collars.

Shallots - Select uniform well-ripened bulbs of good colour. Tops should be tied with uncoloured raffia with the roots neatly trimmed to the base of the onion. Display on a plate of sand rings or soft collars.

Peppers, sweet and hot (chilli). - Select fresh, brightly coloured fruit, size and colour for the cultivar. Fruit may be shown immature but fully formed usually green, or at the mature or coloured stage. The exhibit should be uniform in colour.

Potatoes - should be free from blemishes. Wash very carefully in clean water with a soft sponge – avoid use of a coarse cloth or brush that might damage the skin. Select equally matched tubers, generally between 175g and 225g, with shallow eyes. Should be free from skin blemishes. Stage on plate with rose end outwards.

Tomatoes – (medium-sized) approximately 60mm diameter, well-shaped, rounded fruit, ripe but firm richly coloured fruit with firm, fresh calyces attached and natural bloom. Avoid overripe fruit or those with “greenback”. Stage on plate with calyces uppermost.

Tomatoes (small-fruited/cherry) - Fresh, ripe but firm, well-coloured fruits not exceeding 35mm in diameter, with fresh calyces attached and natural bloom.

FLOWERS AND POT PLANTS

General guidance - Select flowers in good fresh 'condition', i.e. in the most perfect stage of its possible beauty and free from damage due to weather, pests and diseases. Turn pot plants regularly to avoid lopsided development. Cut your flower stems in the cool of the evening or early morning. Leave the stems as long as possible, making a slanting cut to help with water uptake.

Annuals – One vase of five different varieties, one stem of each. Good fresh condition. A good proportion of flowers fully developed and appropriately positioned on their stem(s). The petals should be properly positioned on the flowers and of shape, texture and colour typical of the species or cultivar. The foliage should be clean, healthy and undamaged by weather or pests. The vase of cut mixed flowers will not be judged on the arrangement but should be presented so that it can be viewed from all sides; it is a common mistake to arrange the vase for front viewing.

Cactus or succulent - Any species of cactus is accepted.

Dahlias - Select clean blooms with florets intact, firm and free from blemish. Stem should be straight and proportionate to the size of the bloom and the bloom held at an angle of not less than 45 degrees to the stem. The exception is the Pompon dahlia where the bloom faces upwards, like a drumstick. Stage with blooms all facing in the same direction, not touching and with a balanced effect. Retain some foliage on the stems if possible.

Mixed perennial garden flowers – One vase of mixed kinds, not less than three plants. A good proportion of flowers fully developed and appropriately positioned on their stem(s). The petals should be properly positioned on the flowers and of shape, texture and colour typical of the species or cultivar. The foliage should be clean, healthy and undamaged by weather or pests. The vase of cut mixed flowers will not be judged on the arrangement but should be presented so that it can be viewed from all sides; it is a common mistake to arrange the vase for front viewing.

Pot Plant - Pots or containers should be clean and undamaged. Points will be awarded for: sturdy, shapely plant, healthy unblemished foliage and flowers (if present). All else being equal, preference will be given to plants that are harder to grow. Points will be lost for: unhealthy plant, deformed, undersized, scanty or diseased foliage, dull colour, or a dirty/damaged container. Presentation tips: stakes, wires and cotton etc. may be used as long as they are neat and do not look ugly, and do not detract from the overall appearance of the exhibit

Roses – The exhibit should be balanced in height and width in relation to the container, and enhanced by good colour combination. The flowers and foliage should be artistically arranged to avoid either crushing or excessive gaps and without exposing such expanses of stem or foliage that the flowers are not the dominant feature of the exhibit.

Sweet Peas – One vase of five stems. Display in a fan formation.

Flower Heads on a Board – Cut six holes in the board large enough so that a portion of stem/stalk can be threaded through. Place the board on to a suitable container of water (for example an ice cream container) and ensure the stem/stalk reaches into the water. This will keep the exhibit fresh throughout the show.